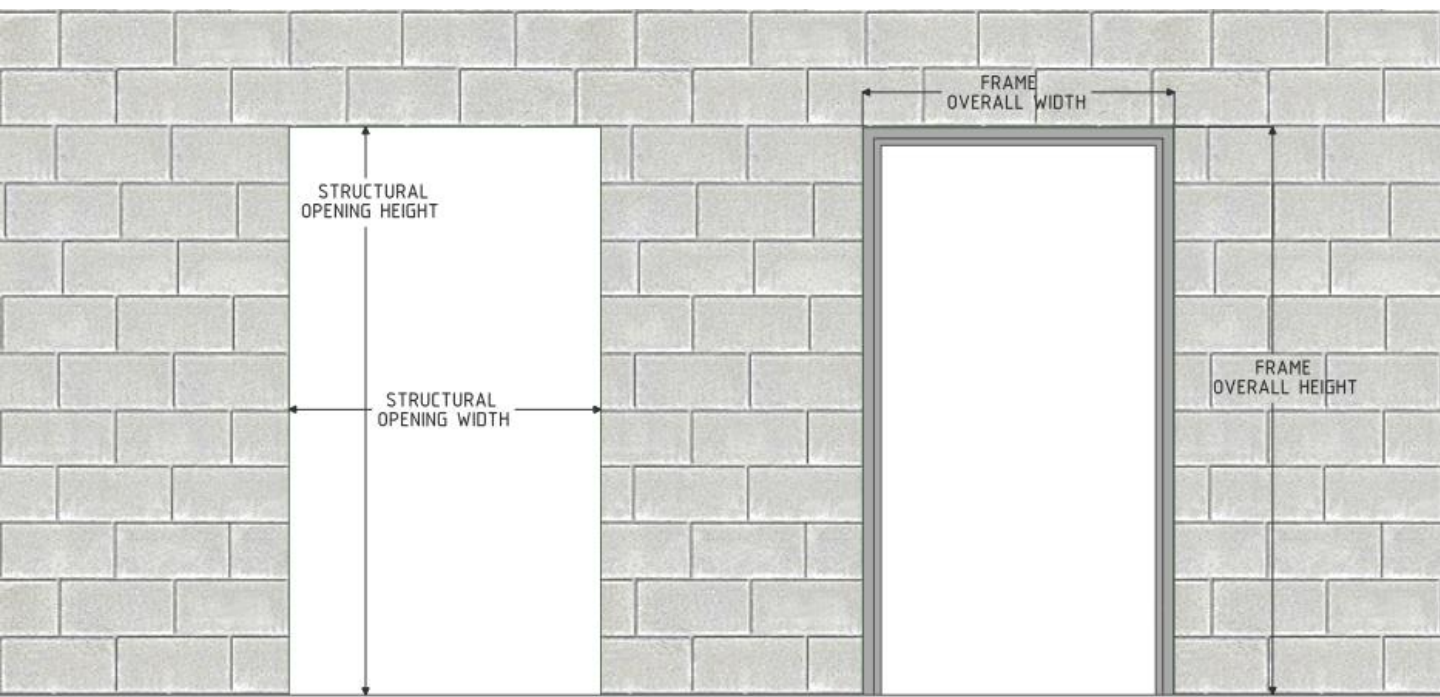
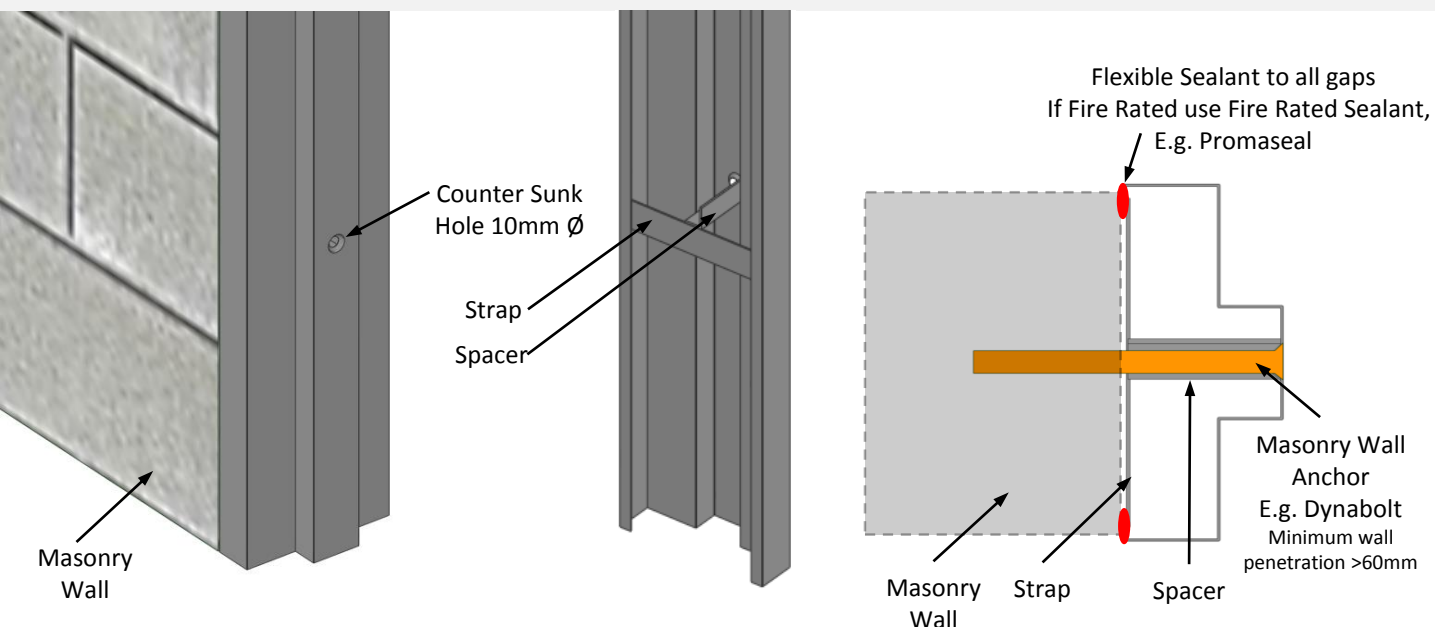


MASONRY WALL TYPE WITH DYNABOLT PREP



Structural Opening

Frame Overall

Example:

If "Structural Opening" dimensions are 2100mm x 1010mm,

The calculated "Frame Overall" dimensions would be 2093mm x 1000mm

(Nominal 5mm gap allowance applied to overall Height and nom. 10mm gap to the overall Width)

Typical Example Only